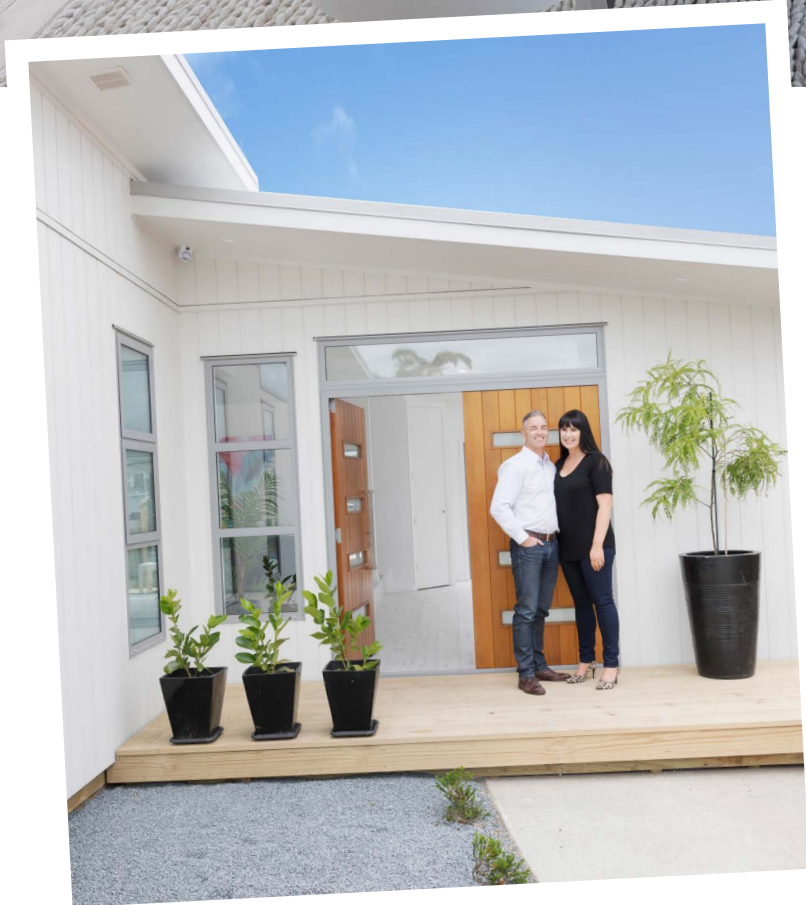
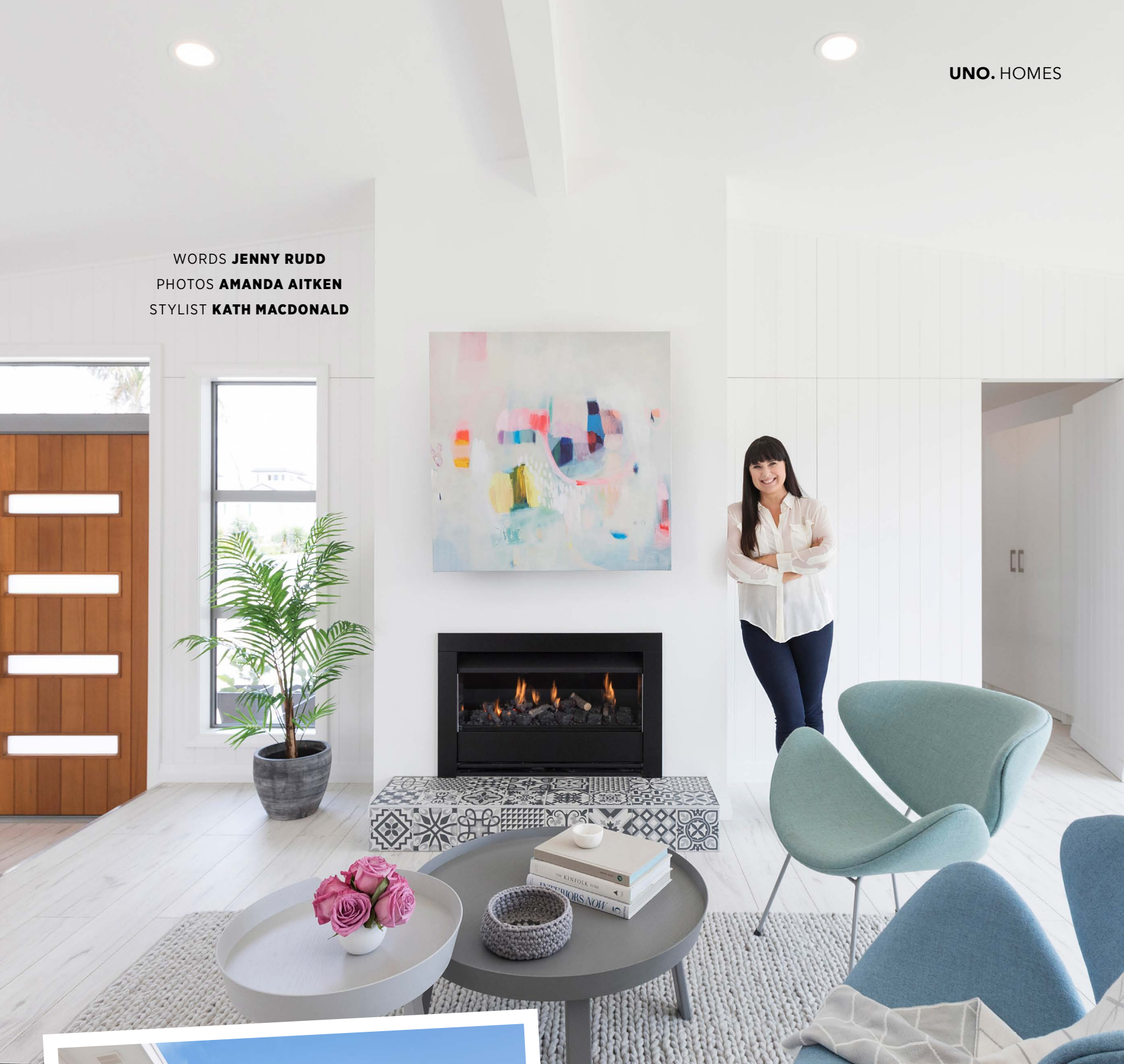


WORDS **JENNY RUDD**  
PHOTOS **AMANDA AITKEN**  
STYLIST **KATH MACDONALD**



# A FRESH START

Many new residents in the Bay have undergone career changes in order to settle here. **Angela Fleet** and her husband, **Nick**, welcome us into their newly renovated bach on Tweed St in the Mount to tell us about Angela's NEW DIRECTION.





**“I am extremely considered in my approach. The decisions we all make can have a big impact on where someone’s heading.”**



SIDEBOARD theearnestworshop.co.nz, PRINT etsy.co.nz.



**O**n arrival, I marvel at the light and white home, with pops of Pacific Ocean blue everywhere. The design is clean and minimal, but there’s a softness to it. “As the new kids, we were in the same boat as all the other newbies here looking to renovate - we didn’t have lots of networks to rely on, so it has been a feeling-out process with everyone involved, and plenty of trial and error.”

I am totally struck by how calm and measured Angela is for someone who has gone through a career upheaval as well as a major house renovation.

“On the same day I turned down a lucrative corporate leadership role, I enrolled at tech and became a student for the second time. We had just moved to Tauranga for Nick’s job. Just as I sat down to sign the contract, Nick said, ‘Don’t do it, your heart’s not in it. Just do what you really want to do.’ I had wanted to work in real estate for a while, so I bit the bullet, and joined all the youngsters studying for real estate papers.” It was obviously a good move, as Bayleys snapped her up.

“I am extremely considered in my approach. The decisions we all make can have a big impact on where someone’s heading.” Nowhere is this more true than when buying or selling a house. “I draw on my experience instinctively, working out what motivates

people to make decisions and choices. I really take my time to think things through, considering all possible known outcomes. It’s made me a great fit with people who are dealing with the biggest financial decision of their lives. I can help them be sure that they are comfortable with their choice. And that’s important when you are dealing with hundreds of thousands of pounds.”

“My last job saw me take on a fairly broken and dysfunctional group of highly capable individuals who had lost confidence in leadership. This was easily my most challenging, sometimes terrifying and ultimately rewarding role, and I learnt so much about helping people do the best they can, and how to go about getting them in the position to excel. As a leader, being authentic and role-modelling behaviour is critical to success. I found setting teams up to perform at their best to be fascinating and fulfilling.”

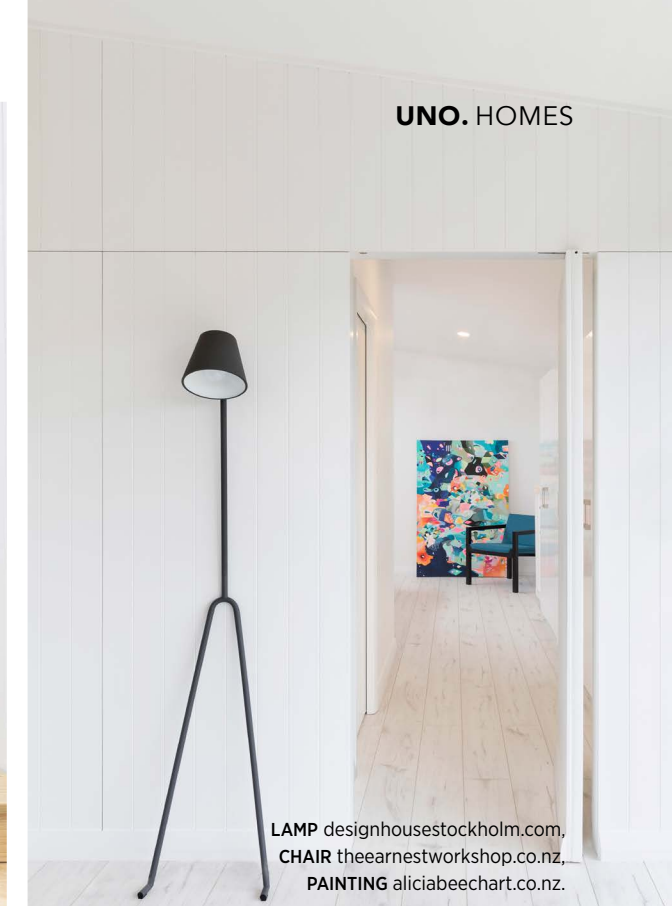
Meeting people like Angela, it’s obvious why our Bay is plentiful. One of a number of migrants we are lucky to be welcoming, she brings with her prodigious skill and plenty of heart. Self-assured, sparkingly intelligent and genuinely kind, she’s exactly the kind of person we want hanging around.

“One of the ways we can determine our own path in life is to make choices which reflect who we really are and what we want to become. Sometimes it just takes time to work out exactly what that is.” **U**

**ANGELAFLEETBAYLEYS**



CHAIRS + SIDE TABLE furnish.co.nz.



LAMP designhousestockholm.com,  
CHAIR theearnestworkshop.co.nz,  
PAINTING aliciaabeechart.co.nz.



PRINT Lola Donaghue giclée etsy.com, CHAIR marcelwanders.com, LINEN jamiekay.co.nz.

